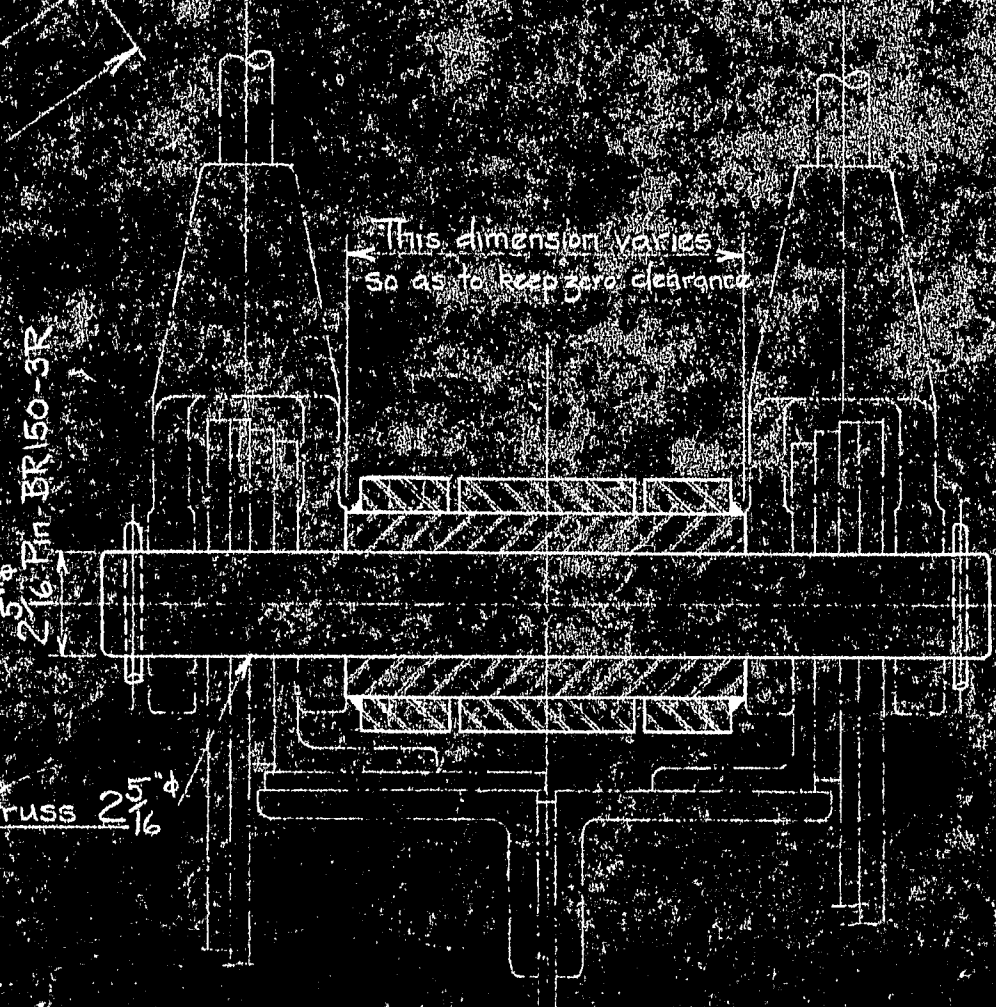


SECTION BB

Side Plate Assemblies
BR150-7U
BR150-7V
BR150-7W
BR150-7X
BR150-7Z

4 Wireline Cables
33 Wire & Cables

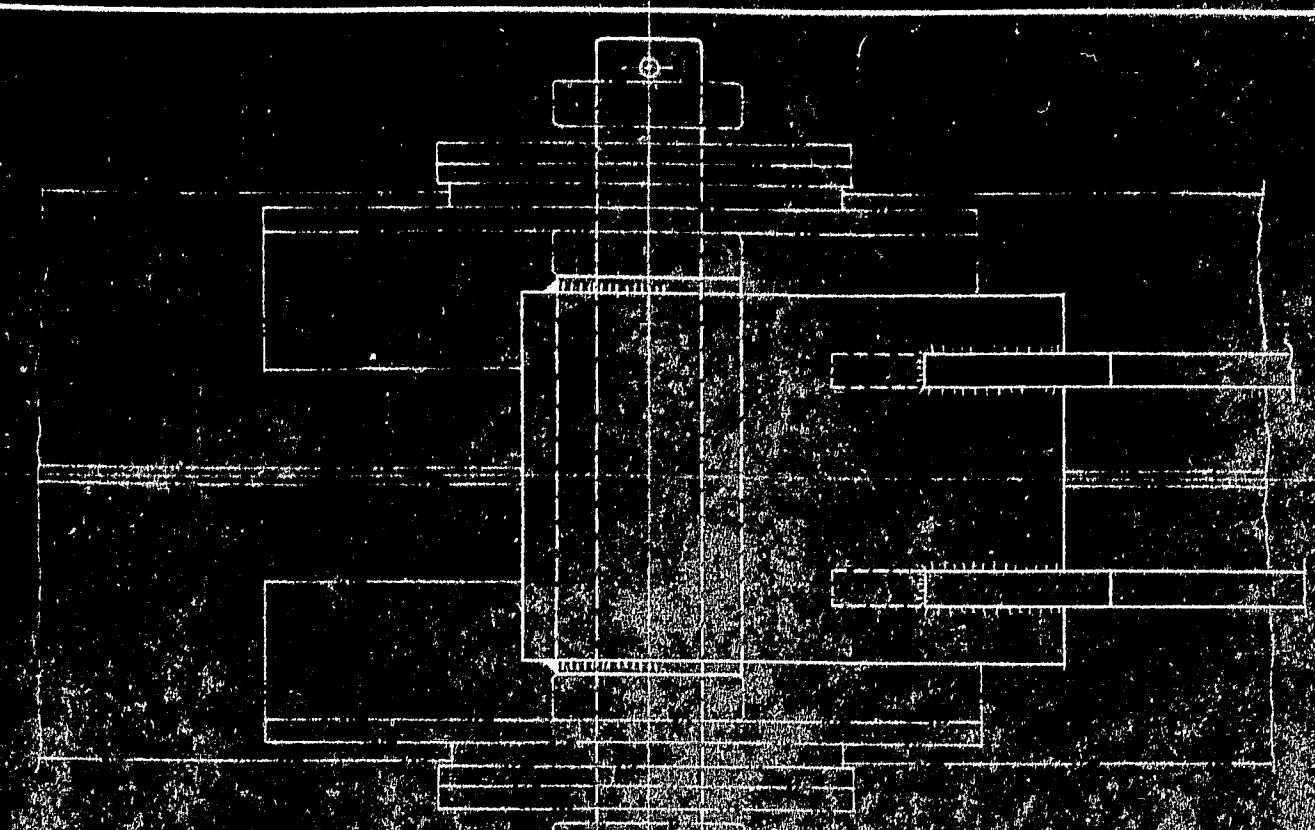
36 at PP 4, 5, 6, 27, 28, 29, 30
36 at PP 7 and 21



SECTION AA

ELEVATION

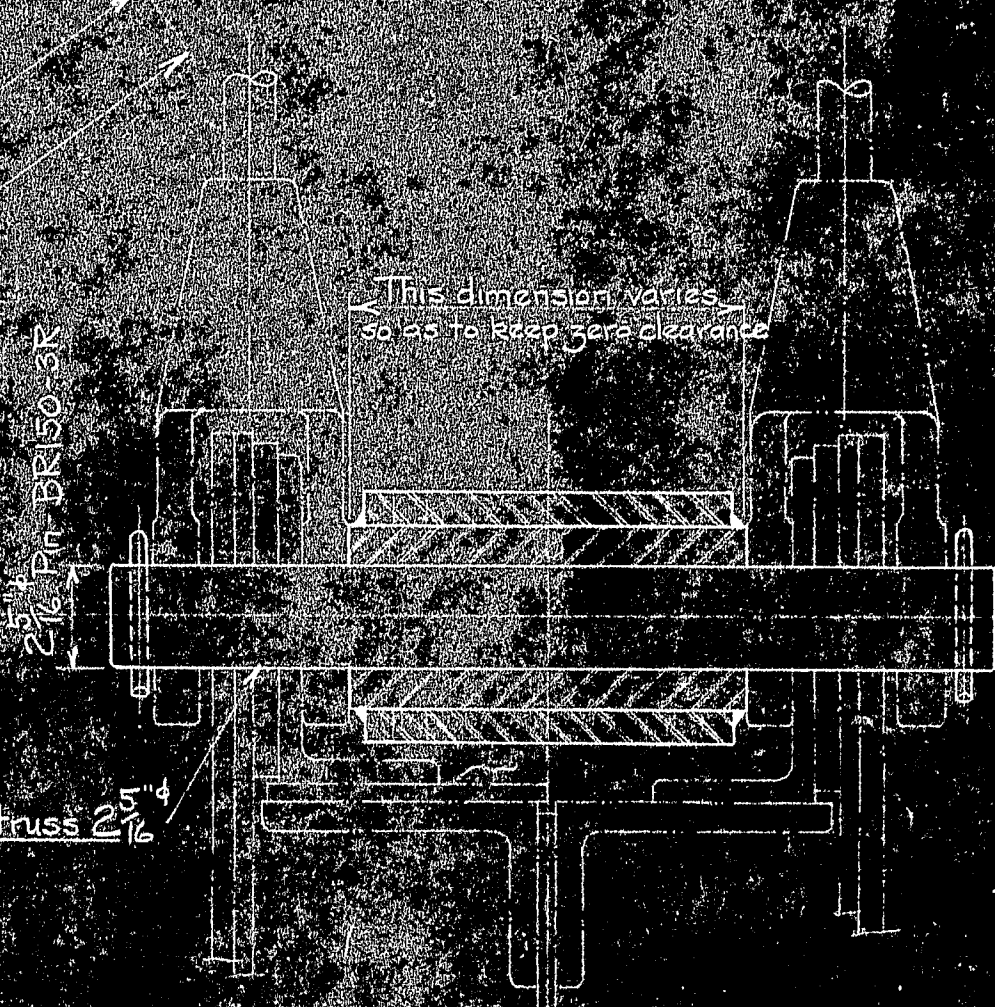
LONGITUDINAL STAY TRUSS CONNECTION AT PANEL POINTS 4-5-6-7-27-28-29 and 30



SECTION DD

Side Plate Assemblies
BR150-7N
BR150-7P
BR150-7Q
BR150-7S
BR150-7T

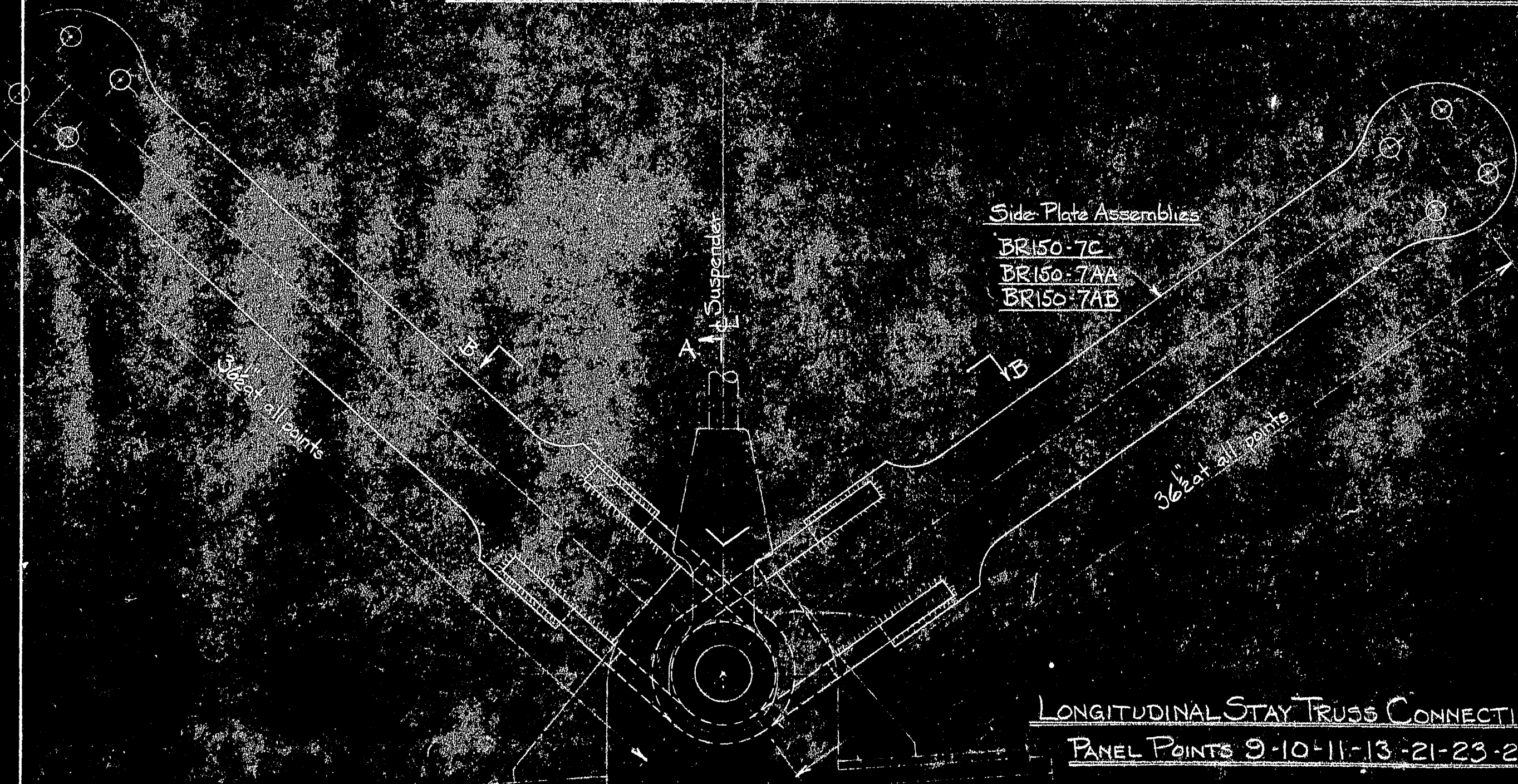
36 at PP 2, 3, 8, 26, 31, 32
36 at PP 5 and 24



SECTION CC

ELEVATION

LONGITUDINAL STAY TRUSS CONNECTION AT PANEL POINTS 2-3-8-26-31 and 32



Side Plate Assemblies
BR150-7C
BR150-7AA
BR150-7AB

36 at all points

LONGITUDINAL STAY TRUSS CONNECTION AT
PANEL POINTS 9-10-11-13-21-23-24 and 25

MARK	REQ'D	MAT'L	REQ. NO.	NAME	REMARKS
BILL OF MATERIAL					
JOHN A. ROEBLING'S SONS CO., TRENTON, N. J.					
DEER ISLE BRIDGE REINFORCEMENT					
ASSEMBLY OF TRUSS CONNECTION FOR LONGITUDINAL STAYS					
BR150-11	Assembly of Longitudinal Stays				
BR150-7	Details of Truss Connection				
BR150-3	Socket Details				
OWG. NO.	TITLE	CH. DR.	ENG'R	SCALE 3" = 1'-0"	SERIAL SHEET
	REFERENCE DRAWINGS			DES. DR. 1-21-44	BR150 8
				TR.	
				CH.	

